

FEATURES

- Automatic for HD-SDI or SD-SDI inputs
- 4 or 8 AES output versions
- 24 Bit AES demultiplexing
- Dolby E, Dolby® Digital compatible

DIGITAL AUDIO HD/SD-SDI DEMULTIPLEXER



The V6334 is a digital audio HD/SD-SDI demultiplexer. Operation is fully automatic with respect to the HD or SD-SDI input. Two versions are available for either 4 or 8 AES outputs. Each version has two rear module options. Option 1 has D type connectors for balanced or unbalanced AES connections and option 2 has BNC connectors for unbalanced AES connections. The BNC option for the 8 AES output version is a dual width rear module. Both V6334 versions implement full 24 bit AES demultiplexing. The V6334 is compatible with non PCM AES streams such as Dolby E and Dolby Digital.

V6334

HD/SD Audio Demultiplexer

Technical Specification

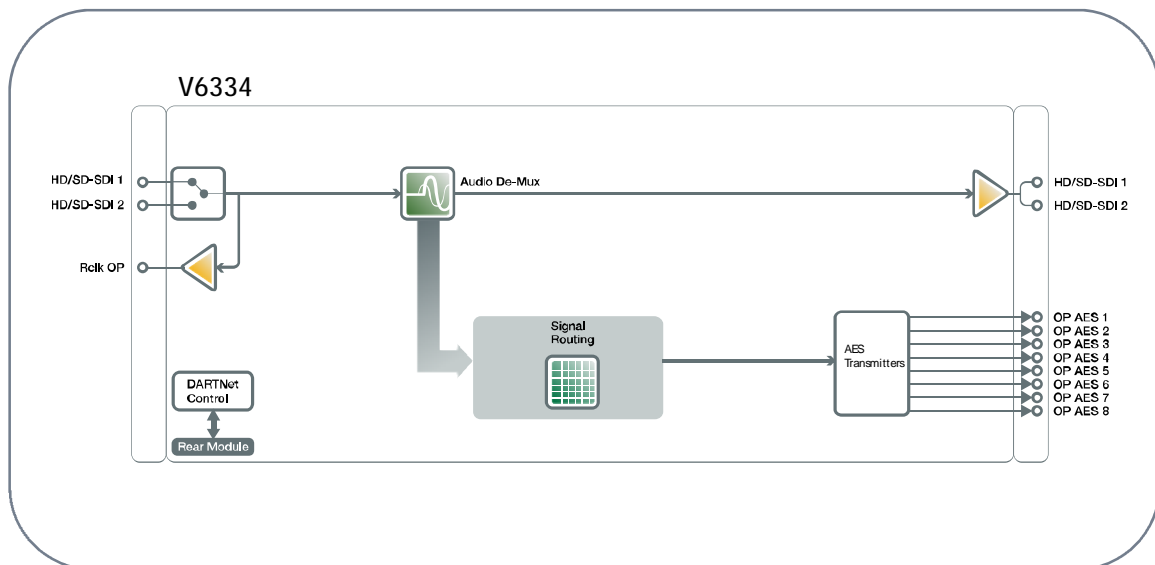
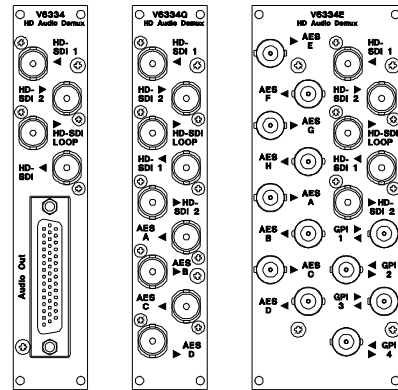
Serial Inputs	2 (Switchable)
Standards	SMPTE 259M (SD), SMPTE 292M (HD)
Multiplexing	SMPTE 272M (SD), SMPTE 299M (HD)
Line/field rates	1080i @ 50Hz, 1080i @ 59.94Hz 720p @ 50Hz, 720p @ 59.94Hz 576i/50Hz, 480i/59.94Hz
Detection	Automatic
Connector	BNC
Impedance	75 ohm
Return loss	>15dB, 5MHz - 1.5GHz
Cable equalisation SD-SDI	Automatic 0-200m @ 270Mb/s (Belden 8281)
Cable equalisation HD-SDI	Automatic 0-100m @ 1.485Gb/s (Belden 1694)
Serial Outputs	2 (Processed + 1 Active Looped from input)
Standards	As inputs
Line/field rates	As inputs
Connectors	BNC
Impedance	75 ohm
Return loss	>15dB, 5MHz - 1.5GHz
Cable drive SD-SDI	200m @ 270Mb/s (Belden 8281)
Cable drive HD-SDI	100m @ 1.485Gb/s (Belden 1694)
AES Outputs	4 or 8
Sampling	48KHz
Format	AES-3
Processing	24 Bit
Connector	HD D Type (26 way) or BNC
Impedance	110 ohm balanced, 75 ohm unbalanced
Cable Equalisation	Up to 250m

Ordering Information

V6334Q/D	HD/SD 4 AES input DeMUX
V6334E/D	HD/SD 8 AES input DeMUX

All Pro-Bel's quoted prices for interface modules include the supply of one suitable rear module. Please specify type required when placing order.

V16AR3AE	3RU - High Density D connector for AES inputs (balanced or unbalanced) Use with V6333Q or V6333E/D
V16AR3AG	3RU - BNC connectors for AES inputs (unbalanced) Use with V6333Q
V16AR3AF	3RU - BNC connectors for 8 AES inputs (unbalanced). Dual width rear module Use with V6333E



WWW.PRO-BEL.COM

UK
+44 (0) 1189 866 123

USA
+1 631 549 5159

France
+33 (0) 1 45 18 39 80

Hong Kong
+ 852 2891 9123

